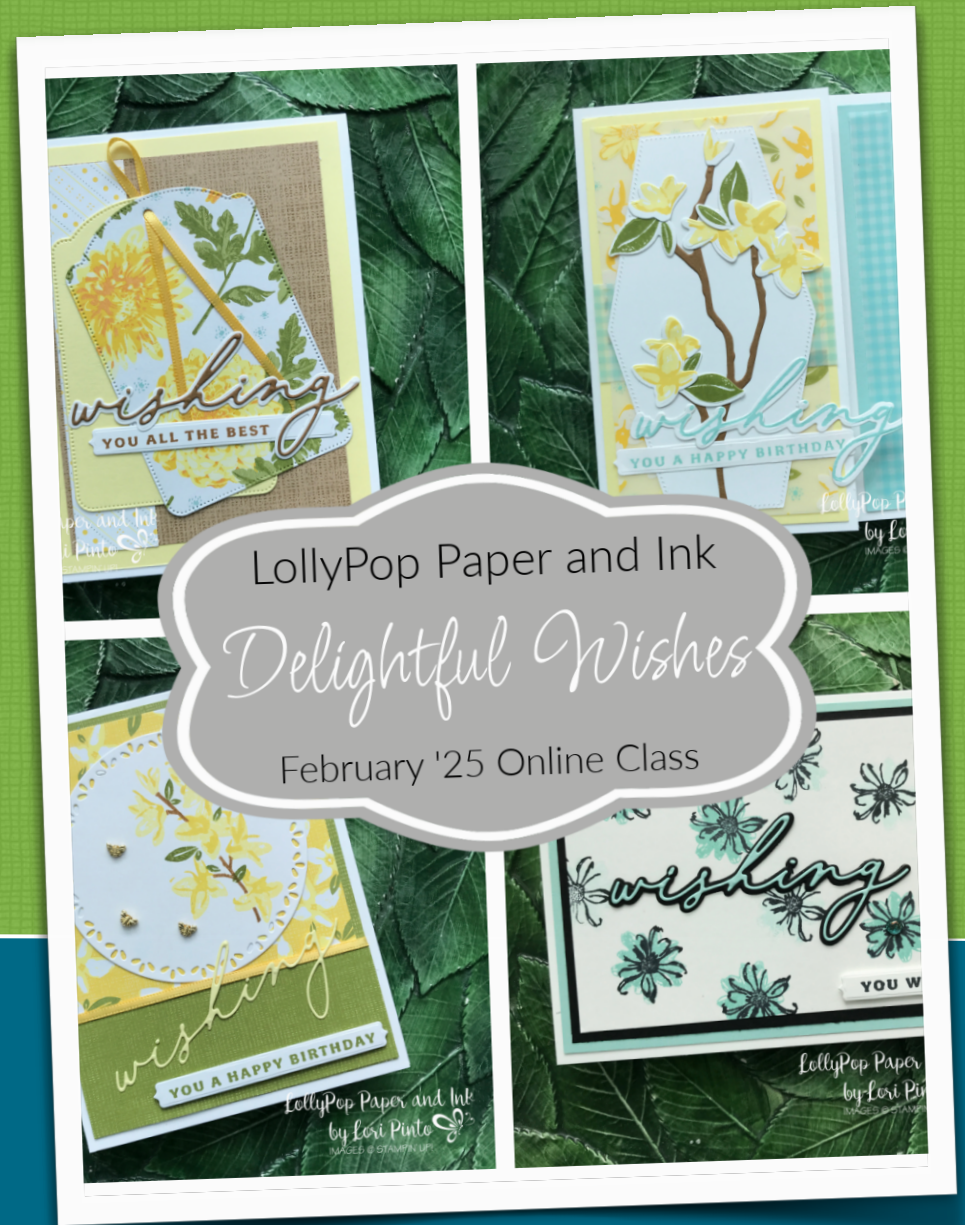


Delightful Wishes Tutorial Pack

Supplies Used: (for all 5 projects)

- Delightful Wishes Bundle
- Floral Delight DSP
- Floral & Gingham Vellum Specialty DSP
- Daffodil Delight Satin Ribbon
- Tiny Bee Trinkets
- Nested Essentials Dies
- Spotlight on Nature Dies
- Greetings of the Season Dies
- Lemon Lolly CS & Ink
- Old Olive CS & Ink
- Pool Party CS & Ink
- Pecan Pie CS & Ink
- Daffodil Delight Ink
- Memento Black Ink
- Basic White (Thick) & Reg CS
- Stampin' Cut & Emboss Machine

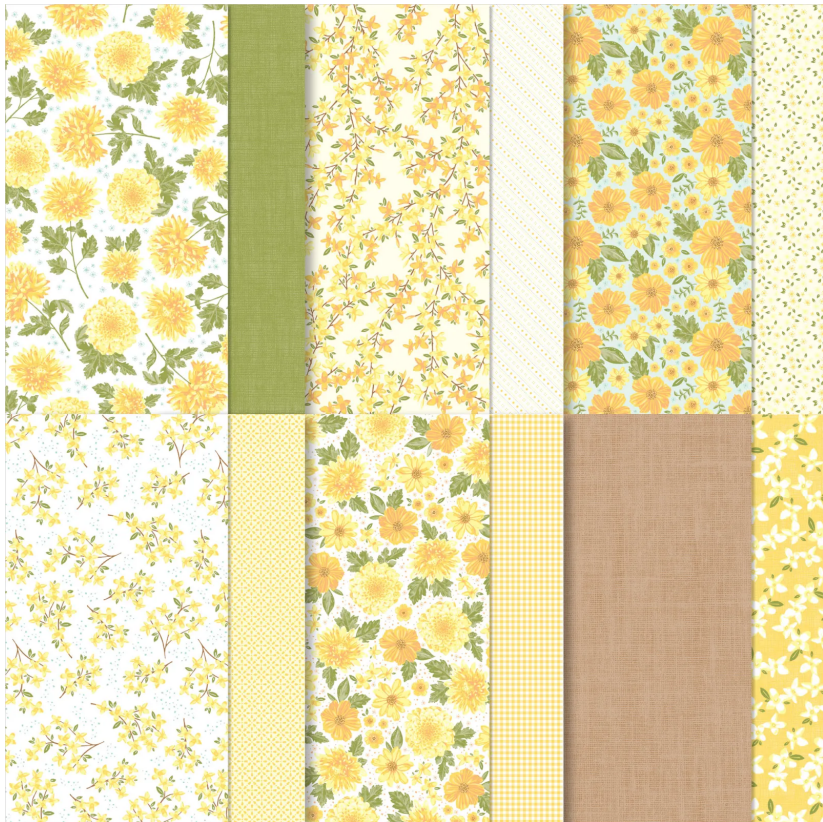


Delightful Wishes Tutorial Pack

www.shopsuwithlori.com



Floral Delight 12" x 12" DSP



Floral & Gingham Vellum 12" x 12" Specialty DSP



Delightful Wishes

Wishing You All The Best

Measurements:

- Basic White (Thick) CS: 11" x 4 1/4" and scored at 5 1/2"
- Lemon Lolly CS: 5 1/4" x 4"
- DSP: 4 3/4" x 3 1/2" and 4 3/4" x 1"

Directions:

- Trim all layers as noted above
- Adhere the Lemon Lolly card stock layer to the card base
- Adhere the DSP layers (trimmed as noted above) to the Lemon Lolly layer
- Crop two large tag dies from the Greetings of the Seasons Dies from both Lemon Lolly card stock and the Floral Delight DSP
- Crop both the outline word (Basic White) and inner word die (Pecan Pie) and adhere together
- Stamp the sentiment in Pecan Pie ink and crop with tag die
- Adhere the two tag dies (askew) and run a strip of Daffodil Delight Ribbon through the ribbon holes
- Adhere the tag dies to the DSP
- Adhere the sentiment die cuts to the card front



Delightful Wishes

Wishing You a Happy Birthday

Measurements:

- Basic White (thick) CS: 8 1/2" x 5 1/2" scored at 3 1/4" x 1"
- Lemon Lolly CS: 5 1/4" x 3"
- Pool Party CS: 5 1/4" x 3/4"
- Specialty Vellum DSP: 5" x 2 3/4", 3" x 1 1/4", 5" x 1/2"

Directions:

- Trim all layers as noted above
- Adhere the 1" tab to the card base
- Adhere the two card stock layers (Lemon Lolly & Pool Party) to the card base as shown
- Crop the large die from Basic White card stock using the Nested Essentials Dies
- Adhere the Specialty Vellum layers to the Lemon Lolly card stock layer and to the Pool Party card stock layer
- Adhere the Nested Essentials die cut over the DSP layers
- Crop the branch die from Pecan Pie card stock and adhere to center of the Nested Essentials die cut
- Stamp and crop several flowers and leaves and adhere to branch die cut
- Crop the outline word die from Basic White scrap
- Crop the inner word die from Pool Party scrap
- Stamp the sentiment in Pool Party ink and crop with die
- Adhere the sentiment die cuts to the card front



Delightful Wishes

Wishing You A Happy Birthday

Measurements:

- Basic White (Thick) CS: 11" x 4 1/4" and scored at 5 1/2"
- DSP (solid print): 5 1/4" x 4"
- DSP (floral print): 3 3/4" x 3 1/2"

Directions:

- Trim all layers as noted above
- Stamp the floral image onto Basic White card stock and crop with one of the large circles from the Spotlight on Nature Dies
- Adhere the smaller (floral print) DSP to the larger DSP layer (solid print) as shown
- Adhere the narrow Daffodil Delight ribbon around the edge of the smaller print and adhere to the back of the DSP
- Adhere both layers to the card front
- Adhere the stamped die cut to the card front
- Crop the inner (narrow) word die from Lemon Lolly card stock and adhere to card front
- Stamp the sentiment in Old Olive ink and crop with tag die
- Add a few Tiny Bee Trinkets to the card front



Delightful Wishes

Wishing You Well

Measurements:

- Basic White (Thick) CS: 8 1/2" x 5 1/2" score at 4 1/4"
- Pool Party CS: 5 1/4" x 4"
- Basic Black CS: 5" x 3 3/4"
- Basic White CS: 4 3/4" x 3 1/2"

Directions:

- Trim all layers as noted above
- Stamp the (two-step) floral image randomly on the Basic White layer (Memento Black and Pool Party ink)
- Stamp the sentiment in Memento Black ink and crop with tag die (Run the die through the machine twice to reduce the size of the sentiment tag)
- Adhere the stamped layer to the Basic Black layer, adhere both to the Pool Party layer and then all layers to the card base
- Crop the (outline word) die from Basic Black card stock and the (inner word) die from Pool Party card stock
- Adhere both layers together and adhere to card base
- Adhere sentiment tag to card front using Dimensionals
- Add a few embellishments to the card front



LollyPop Paper and Ink
by Lori Pinto
IMAGES © STAMPIN' UP!

Delightful Wishes

BONUS PDF

Wishing Lots of Love

Measurements:

- Basic White (Thick) CS: 8 1/2" x 5 1/2" and scored at 4 1/4"
- Floral & Gingham Specialty DSP: 5 1/4" x 4"
- Floral Delight DSP: 3 1/2" x 1 1/2"

Directions:

- Trim all layers as noted above
- Adhere the Vellum and DSP layers to the card base
- Stamp (two-step stamp using Lemon Lolly and Daffodil Delight) and crop three small flowers and three leaves (Old Olive)
- Crop the small and large flowers (with inner detail die cuts) (I used Lemon Lolly and Daffodil Delight)
- Crop the outline word die from a strip of Foam Adhesive Sheets
- Crop the inner word die from Old Olive card stock
- Adhere the two die cuts together and then to the smaller middle DSP layer
- Adhere the stamped flowers and die cuts to opposing corners of the DSP layer
- Stamp the sentiment in Old Olive ink and trim to fit below the focal image word die cut
- Add a few embellishments to the flower centers



LollyPop Paper and Ink
by Lori Pinto